

Elite SX Commercial Series

Security & Access Control

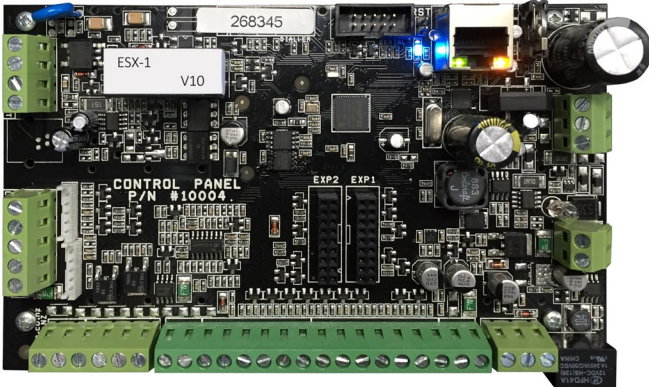


Designed and manufactured in New Zealand

EliteControl 

Elite SX Hardware

5 Year Warranty



ESX-1

Expandable 8/16 inputs, 4 way output control panel with on board ethernet port, dialler & clean contact relay. Supports up to 64 inputs, 32 outputs, 32 partitions, 32 keypads, 32 time schedules, 32 holidays, 2000 users, 10000 + events & simple 4 wire bus.

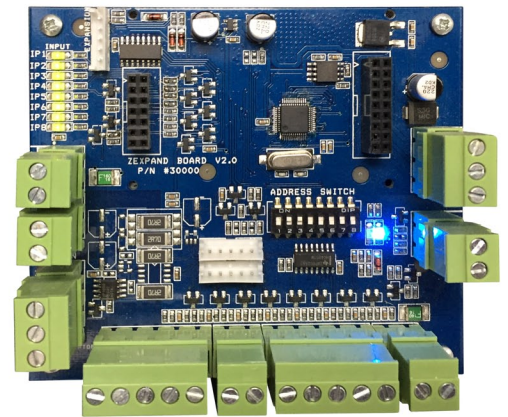
Based on the familiar Elite S platform, this system is simple to program from a keypad or our user friendly built in web browser upload/download.

ESX-Z8

8/16 input zone expander for ESX-1 control panels.

Each ESX-Z8 contains 8 individual zone inputs which are expandable to 16 zone inputs when using zone doubling. Contains an on board tamper input for extra security in remote installations.

Simple dipswitch addressing system for single end of line or zone doubling wiring configuration of up to 64 zones. Zone unsealed LED for each input to identify unsealed zones at the ESX-Z8 board.

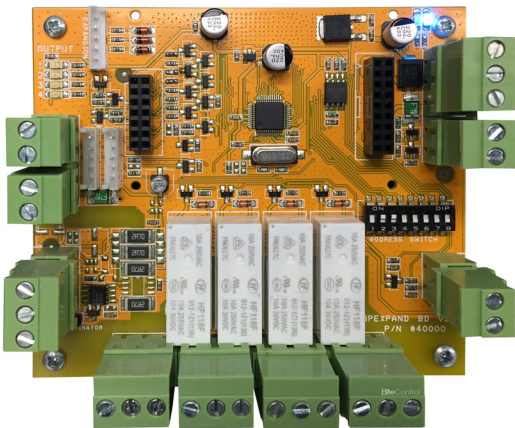


ESX-O4

4 way output expander for ESX-1 control panels.

Each ESX-O4 contains 4 individual 10A 250VAC rated clean contact relays. These outputs can be individually configured to suit your application & run up to 100m from the ESX-1 control panel on a single 4 wire bus.

Simple dipswitch addressing system for up to 32 outputs. LED for each output when relay is activated.



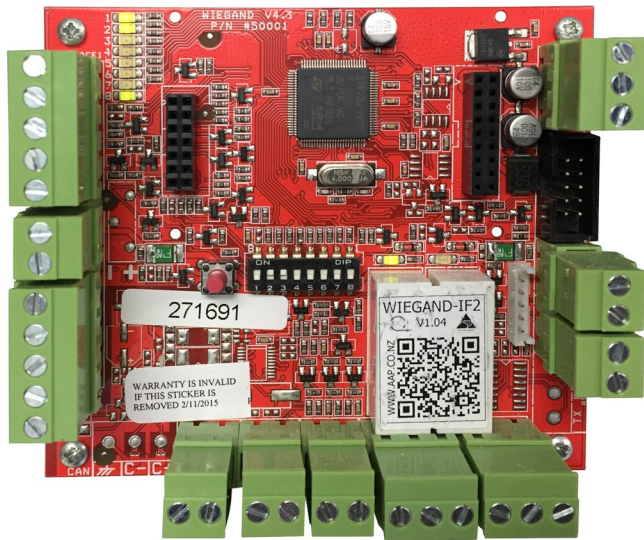
ESX-KP1 & ESX-KP1-P

Blue backlit full english text LCD keypad for Elite SX series. Multi function with assignable buttons & optional inbuilt proximity reader for access control and simple arm/disarm.

Up to 32 areas can be armed globally or individually from each ESX-KP1 or ESX-KP1-P. Each keypad has an input that can be used as a zone or as a dialler listen-in function.



Integrated Access Control



WIEGAND-IF2

Access control module for Elite S & Elite SX control panels.

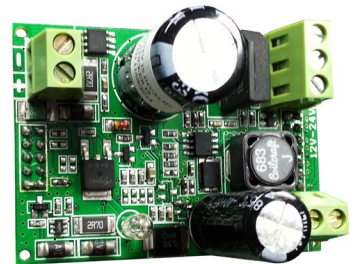
Interfaces up to 2 proximity reader/keypads with the Elite SX control system for security and access control integration. Users can swipe a tag or enter a code to allow electronic access of pedestrian doors, garage doors and gates. Functionality also includes system arm/disarm, lighting control, user logging and much more.

The WIEGAND-IF2 also features 2 programmable inputs for electronic lock monitoring, exit buttons, emergency exit buttons, reed switches and alarm sensors. On board tamper input for security when the WIEGAND-IF2 is mounted remotely.

ESX-PSU2

13.8VDC plug in power supply module with battery charging and dynamic load test.

Plugs into the ESX-Z8, ESX-O4 & WIEGAND-IF2 modules for 13.8VDC 2A max power. Ideal for powering auxillary ESX accessories in remote locations while saving cabinet real estate (Requires 16VAC 1.5A transformer). AC fail and battery low can be monitored remotely via the ESX-1 control panel.



Reader/Keypad Options

The Elite SX supports 3 main reader/keypad options. Functionality includes: Arm and/or disarm, pedestrian door, garage door and gate control. Programmable LED indication to follow ESX-1 output status, plus selectable exit/entry delay beeps.

Users can be assigned to selected reader/keypads for permitted or restricted access. This access can also be limited to time schedules or programmed to a limited number of entries.

Tags/cards can be badged to open the specified door while disarming the system at the same time. Tags/cards can also be double badged to arm the system when exiting.



120 x 75 x 20mm



122 x 50 x 22mm

CPT-DH16A-12DT-W



152 x 44 x 23mm

ESX-RS232

The plug-in RS232 board allows two way communication between the Elite SX and automation systems using simple ASCII commands.

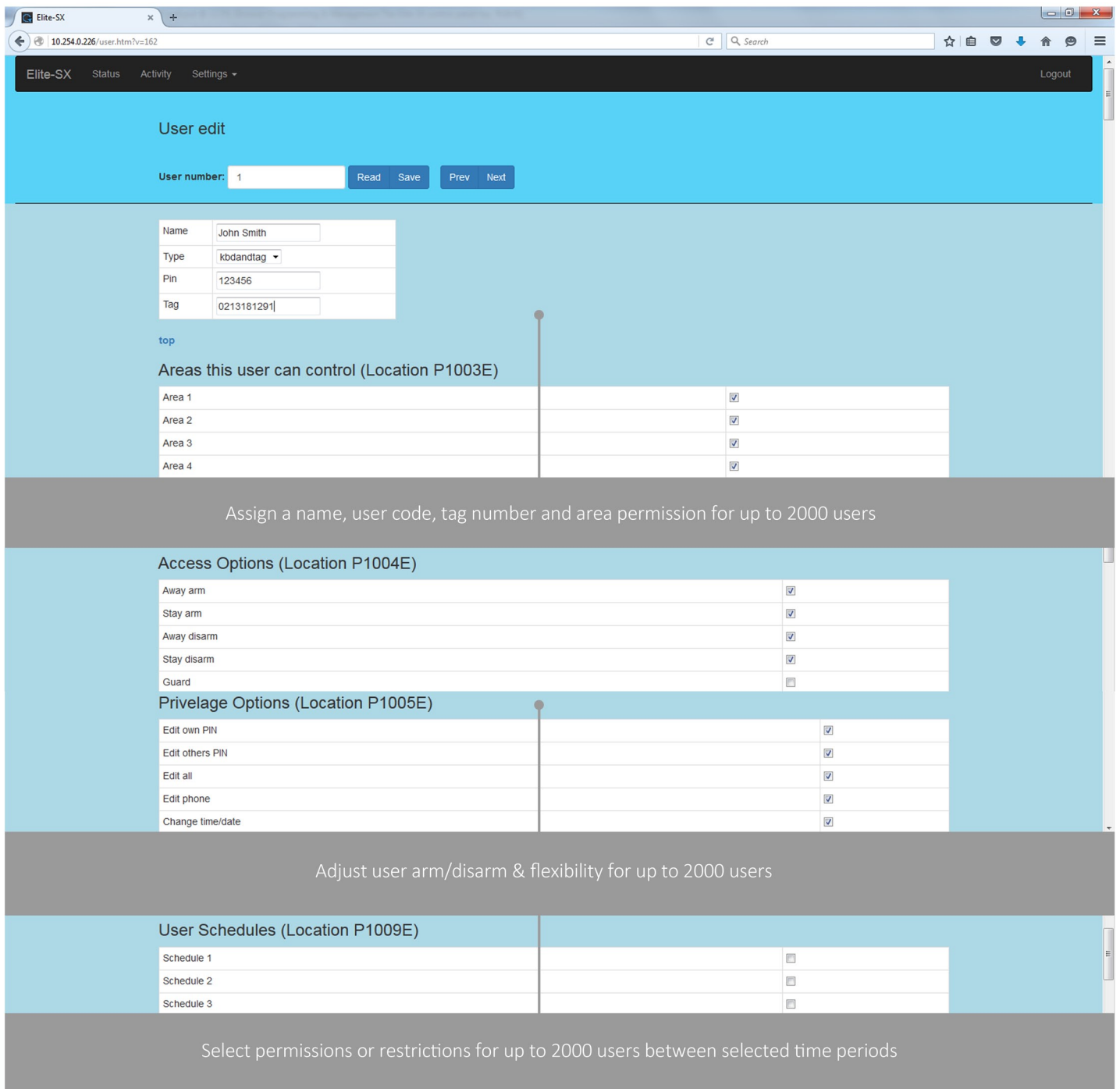


Programming & Management

Browser Programming & Management

The Elite SX control panel has a built in web browser for management and programming. This can be utilised locally or remotely on your network and proves a useful tool for tracking and assigning user access.

Below is an example of simple user permission programming:



The screenshot shows the 'User edit' page of the Elite-SX web interface. The browser address bar shows '10.254.0.226/user.htm?v=162'. The page has a navigation bar with 'Elite-SX', 'Status', 'Activity', and 'Settings'. A 'Logout' link is in the top right. The main content area is titled 'User edit' and includes a 'User number' field set to '1', with 'Read', 'Save', 'Prev', and 'Next' buttons. Below this is a form for user details: Name (John Smith), Type (kbdandtag), Pin (123456), and Tag (0213181291). A 'top' link is present. The 'Areas this user can control (Location P1003E)' section shows a table with four areas, each with a checked checkbox. A grey banner below states: 'Assign a name, user code, tag number and area permission for up to 2000 users'. The 'Access Options (Location P1004E)' section shows a table with five options: Away arm, Stay arm, Away disarm, Stay disarm (all checked), and Guard (unchecked). The 'Privilege Options (Location P1005E)' section shows a table with five options: Edit own PIN, Edit others PIN, Edit all, Edit phone, and Change time/date (all checked). Another grey banner states: 'Adjust user arm/disarm & flexibility for up to 2000 users'. The 'User Schedules (Location P1009E)' section shows a table with three schedules, each with an unchecked checkbox. A final grey banner states: 'Select permissions or restrictions for up to 2000 users between selected time periods'.

Areas this user can control (Location P1003E)		
Area 1		<input checked="" type="checkbox"/>
Area 2		<input checked="" type="checkbox"/>
Area 3		<input checked="" type="checkbox"/>
Area 4		<input checked="" type="checkbox"/>

Assign a name, user code, tag number and area permission for up to 2000 users

Access Options (Location P1004E)		
Away arm		<input checked="" type="checkbox"/>
Stay arm		<input checked="" type="checkbox"/>
Away disarm		<input checked="" type="checkbox"/>
Stay disarm		<input checked="" type="checkbox"/>
Guard		<input type="checkbox"/>

Privilege Options (Location P1005E)		
Edit own PIN		<input checked="" type="checkbox"/>
Edit others PIN		<input checked="" type="checkbox"/>
Edit all		<input checked="" type="checkbox"/>
Edit phone		<input checked="" type="checkbox"/>
Change time/date		<input checked="" type="checkbox"/>

Adjust user arm/disarm & flexibility for up to 2000 users

User Schedules (Location P1009E)		
Schedule 1		<input type="checkbox"/>
Schedule 2		<input type="checkbox"/>
Schedule 3		<input type="checkbox"/>

Select permissions or restrictions for up to 2000 users between selected time periods

User edit

User number:

1

Read

Save

Prev

Next

Devices this user can use (Location P1010E)

Device 1	<input checked="" type="checkbox"/>
Device 2	<input checked="" type="checkbox"/>
Device 3	<input checked="" type="checkbox"/>
Device 4	<input checked="" type="checkbox"/>
Device 5	<input checked="" type="checkbox"/>
Device 6	<input checked="" type="checkbox"/>

Assign up to 2000 users to selected doors, gates, lights & more

Outputs this user can turn on (Location P1013E)

Output 1	<input type="checkbox"/>
Output 2	<input type="checkbox"/>
Output 3	<input type="checkbox"/>
Output 4	<input type="checkbox"/>
Output 5	<input type="checkbox"/>
Output 6	<input type="checkbox"/>
Output 7	<input type="checkbox"/>
Output 8	<input type="checkbox"/>
Output 9	<input type="checkbox"/>
Output 10	<input type="checkbox"/>

Users can be assigned to only be able to turn a device on

Outputs this user can turn off (Location P1014E)

Output 1	<input type="checkbox"/>
Output 2	<input type="checkbox"/>
Output 3	<input type="checkbox"/>
Output 4	<input type="checkbox"/>
Output 5	<input type="checkbox"/>
Output 6	<input type="checkbox"/>
Output 7	<input type="checkbox"/>
Output 8	<input type="checkbox"/>
Output 9	<input type="checkbox"/>
Output 10	<input type="checkbox"/>
Output 11	<input type="checkbox"/>
Output 12	<input type="checkbox"/>
Output 13	<input type="checkbox"/>
Output 14	<input type="checkbox"/>
Output 15	<input type="checkbox"/>
Output 16	<input type="checkbox"/>

Users can be assigned to only be able to turn a device off

Limited usage options

Usage counter (Location P1025E 1-255, 255=disabled)	255
Start date (YYYY-MM-DD Location P1026E)	2016-02-14
End date (YYYY-MM-DD Location P1027E)	2016-02-18
Start time (HH:MM, Location P1028E)	07:00
Stop time (HH:MM, Location P1029E)	17:30

Restrict user device control to certain dates, hours & even usages

Elite control systems have been designed & manufactured in New Zealand for over 20 years. Our experience and support has maintained our spot in the security & access control industry.

Contact your installer for product features and limitations. This will help provide a tailored system to suit your requirements.

